



Award winning transformation of a 60 year old home using Shera



Be inspired by the journey of a 60 year old house in Thailand that was transformed into a chic contemporary home developed with Shera products. This home was in disrepair, and had been affected by flooding during the rainy season, as well as termites. Mr. Somrit and Pauline Sunthornrangsee, had spent a majority of their lives in the house and had raised their daughter in the home. The thought of tearing down a home that held so many memories and nostalgia was not easy. So the couple decided to combine the old and the new. In addition they would have a home that would be safe from the flood waters and termite deterioration. Mr. Somrit and Pauline Sunthornrangsee, the architect and interior designer, decided to renovate the house. By changing the old house that was built 60 years ago into a modern black loft style house by trusting to use SHERA products as the main material for designing the whole house.

By using almost all **SHERA** products from interior and exterior *walls, floors in the house, ceiling to roofs*. For the reasons of easy to maintenance, fast installation, and its beautiful and modern touch to match with the house.





This designer couple divided their duties. Somrit is a structural design architect and external architecture. As for Pauline, commissioned for interior decoration with the following design concepts



- Maintain the old house structure, but dismantling the roof and raising the new roof to the same height, make the house look airy. The new house uses steel structures for quick construction. Design is a 3 and a half story house.
- Position the house with regard to consistency with the sun and wind direction. There is an extension of the front of the house and the old house is opposite the new house to trap the wind. At the same time, the window position is in the direction that the wind will blow easily into the house. Making the house cool and comfortable even without turning on the air conditioner
- Open the space between the two houses to have a courtyard in the middle. No matter where you are, you can see all the green areas. The interior is connected between the two houses. When in the house, almost never felt which part was the old and new house.
- Bring all the living areas to the second floor. Both the living room, the kitchen, the dining room and the bedroom to create privacy in use at the same time, no need to worry about flooding problems anymore.



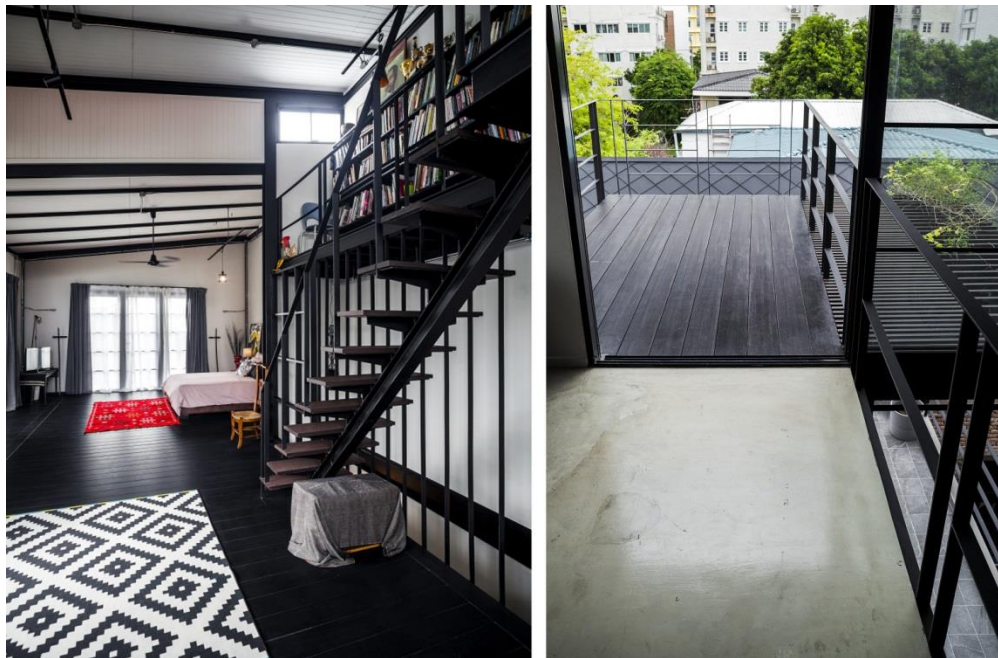
Inside the kitchen and dining area use the second floor area of the original house seamlessly connected to the living room. The old roof is dismantled and the new roof is raised by another 1.5 meters, making the house look airy. **SHERA ceiling tiles** are selected according to the slope of the roof and insulate the heat insulation inside the other layer.



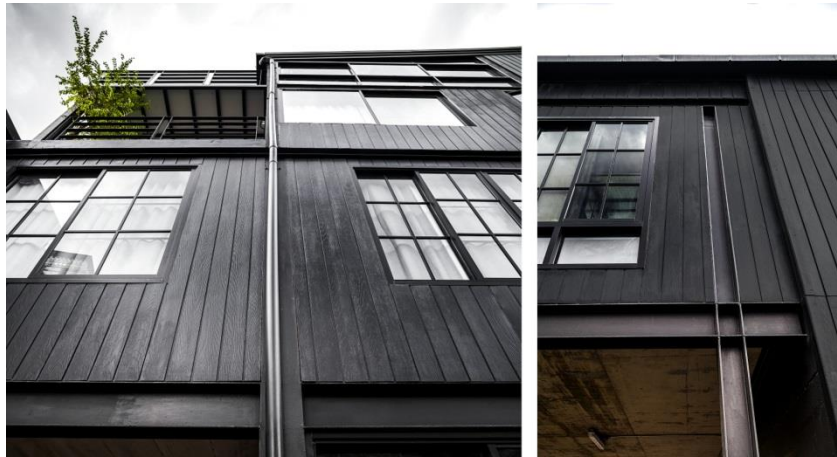
Although there are openings around the house, don't worry if you forget to close the doors and windows around the house while it rains. Because **SHERA flooring** is resistant to moisture and flooding



*The steel frame stairs are designed to be simple. Slim but slim looking harmonious when laid on the floor of the **SHERA staircase**, which can be brought forward and installed quickly on site is strong and durable and able to support the weight well without being fragile or easily broken*



*On the third floor, the design is the daughter's resting area. Choose a black SHERA floor to match the second floor. And add mezzanine to collect books The floor on the mezzanine floor uses floor tiles SHERA board, 20 millimeters thick. The original color of the material coated on the other layer gives the feeling of bare cement but is easier to install with a dry system. Continue out onto the balcony outside of **SHERA wood flooring**.*



The exterior of the house selected SHERA Splendid Plank to cover off vertically giving an unusual line from the generally used horizontal, an interesting alternative for exterior decoration, and also paired with the modern, beautiful steel structure.



The roofs of the old house used the Limited Edition black SHERA roof, similar to the black kite tiles, while the new house used white trilon tiles that reflect heat into the house.

Shera is exclusively imported by Woodworks Unlimited. The store is located at Rue de Quinssy, Providence. The friendly sales team will be more than happy to assist with consulting you on the best applications to use for your project. Woodworks Unlimited 4374919.